

THE UNIVERSITY OF  
CINCINNATI  
By *Charles F. Smith* Rev.  
Consulting Architect

At Mt. Carmel

STATE OF OHIO  
THE MAHONING VALLEY SANITARY DISTRICT  
CONTRACT NO. 29  
**PURIFICATION & PUMPING WORKS**  
PRELIMINARY TREATMENT WORKS  
EAST ELEVATION

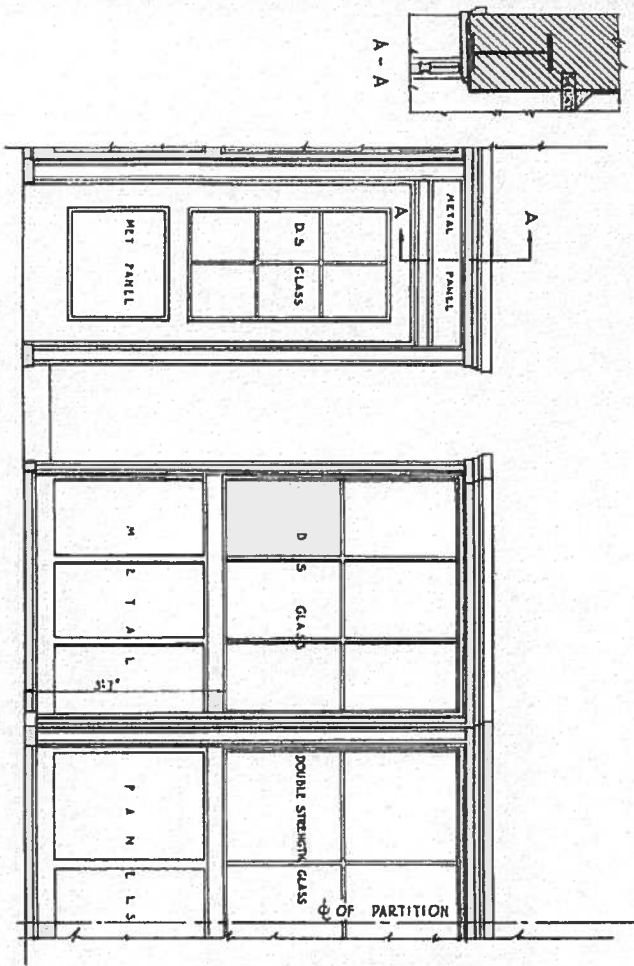
Scale  
1" = 10'-0"  
April 1936

*Charles F. Smith*  
Deputy Civil Engineer

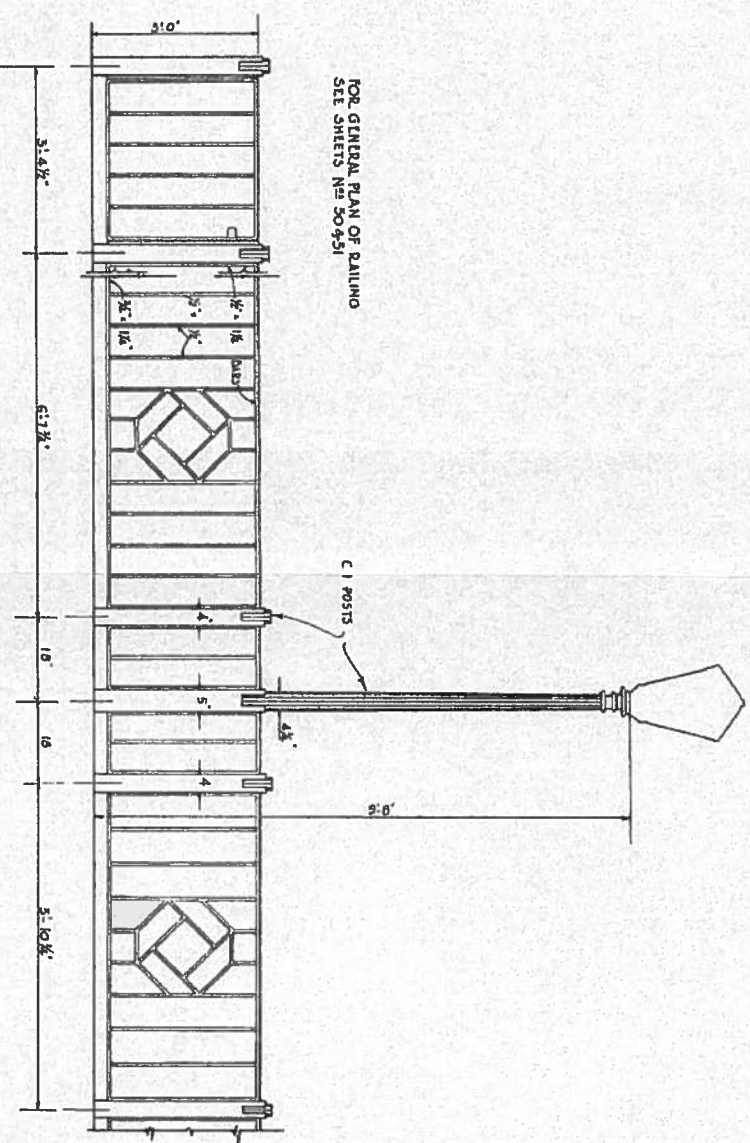
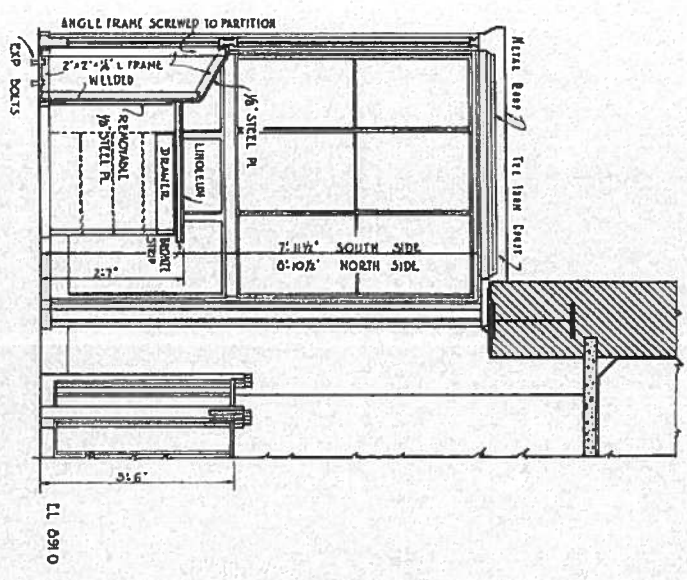
*W. H. A. L. L.*  
Civil Engineer

65

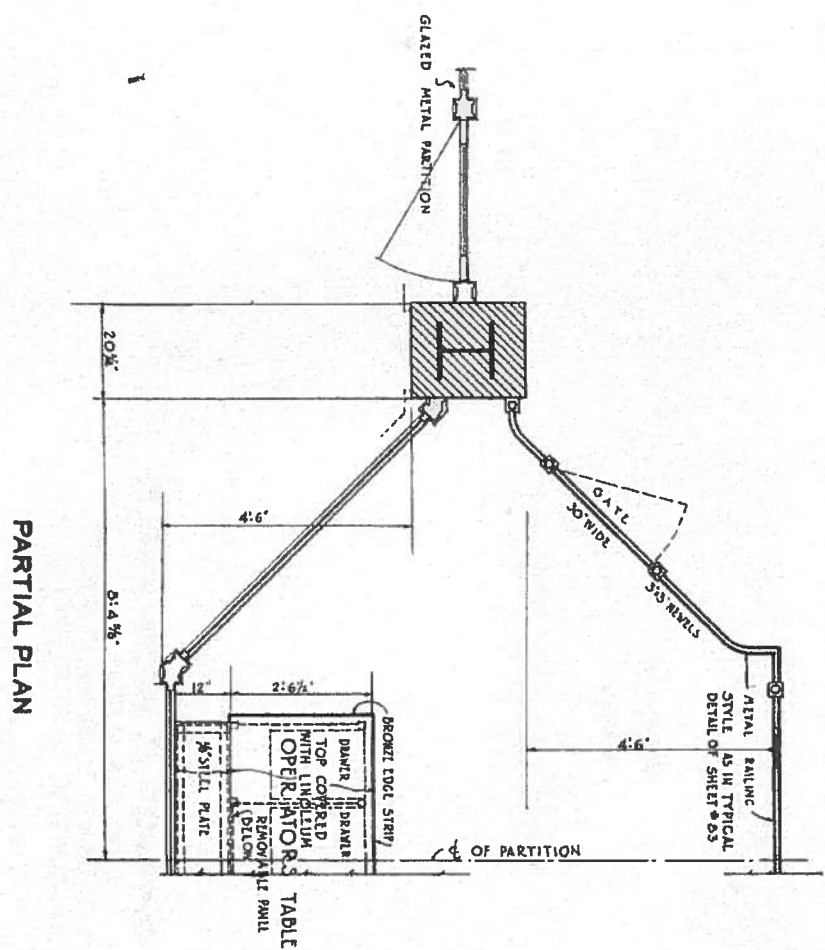
Figure 23 - Dwg. 65 - Prelim Treatment Works - East Elev.tif



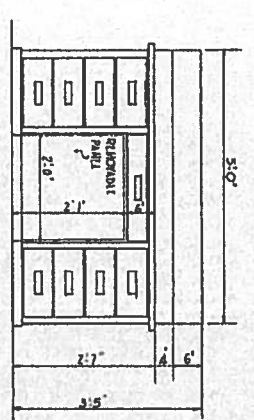
PARTIAL ELEVATION GLAZED METAL PARTITION



W.I. RAILING ABOUT OPEN SETTLING BASINS



PARTIAL PLAN



FRONT ELEVATION OF OPERATORS DESK

NOTES  
GLAZED METAL PARTITIONS WITH OPERATORS  
DESK & GLAZED ENCLOSURE OCCUR AT EACH  
END OF HEAD HOUSE AS SHOWN ON SHEETS 52-53.

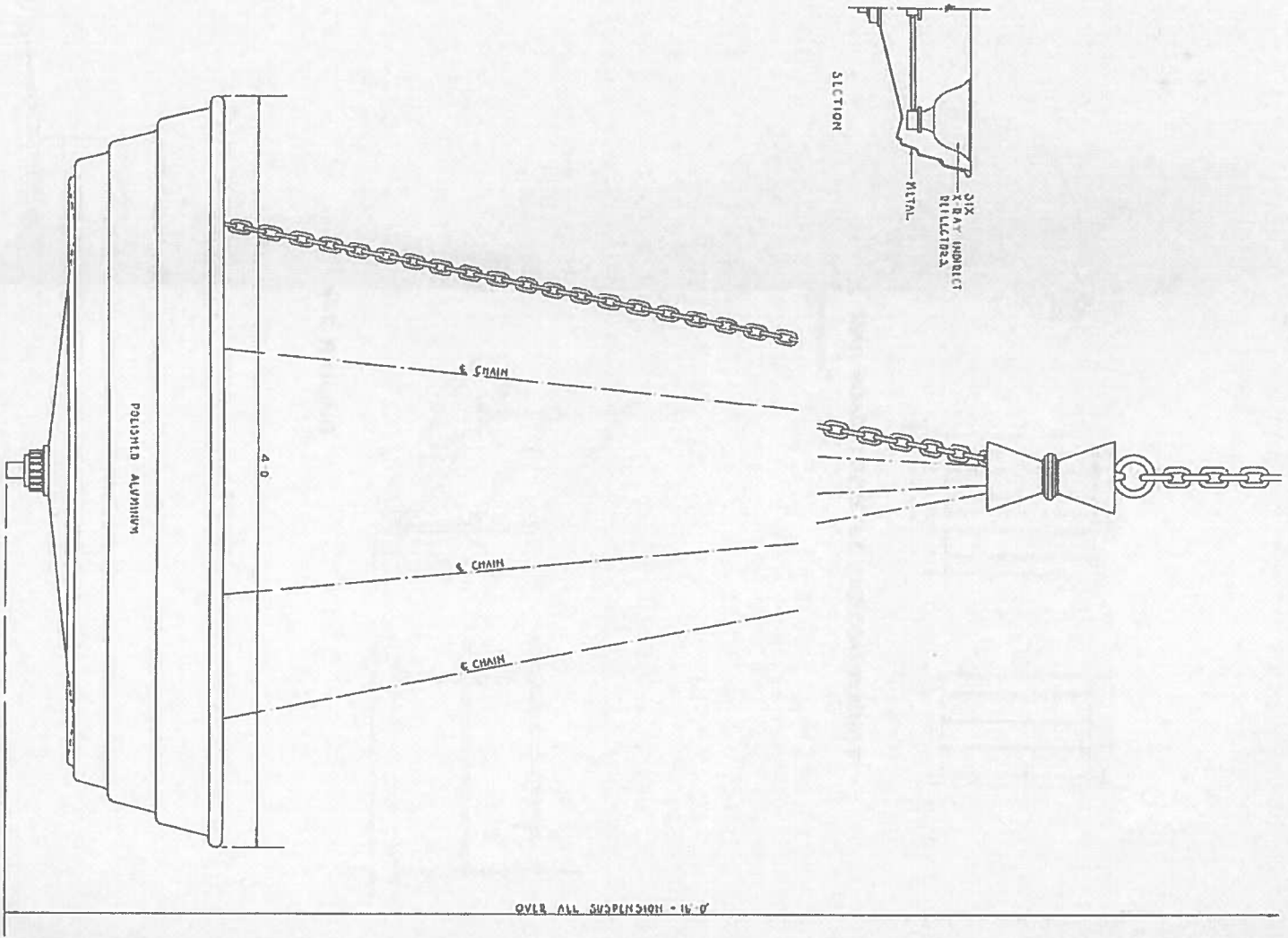
STATE OF OHIO  
THE MAHONING VALLEY SANITARY DISTRICT  
CONTRACT NO. 29  
**PURIFICATION & PUMPING WORKS**  
PRELIMINARY TREATMENT WORKS  
TYPICAL DETAILS OF W.I. RAILING ABOUT OPEN SETTLING  
BASINS & GLAZED METAL PARTITIONS IN HEAD HOUSE

THE QUALITY CO.  
by Alexander F. Quast, Inc.

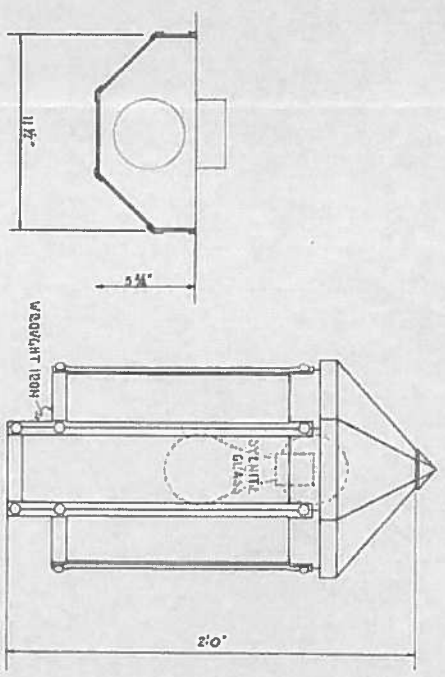
STATE OF OHIO  
THE MAHONING VALLEY SANITARY DISTRICT  
CONTRACT NO. 29  
APRIL 1930  
W. J. D. [Signature]  
Chief Engineer



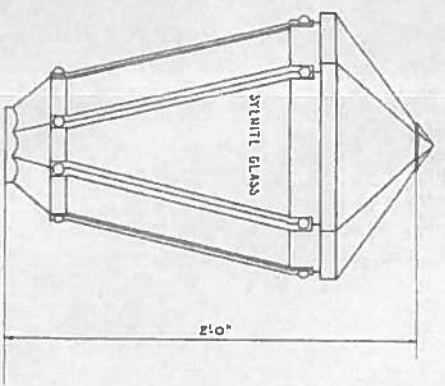
1  
FIXTURE IN DOME  
OF ADMINISTRATION BUILDING



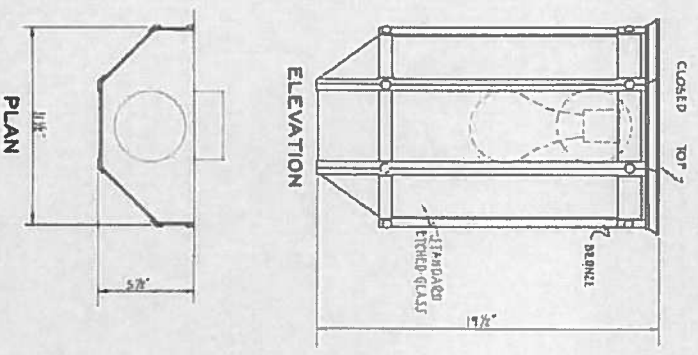
PLAN  
OUTSIDE WALL LANTERN  
AT FRONT ENTRANCE, AND WEST FACADE OF  
PRELIMINARY TREATMENT WORKS



OUTSIDE POST LANTERN  
IN RAILING AROUND SETTLING BASINS



INTERIOR WALL LANTERN  
IN FILTER OPERATING GALLERY WASH WATER  
PUMP ROOM AND BALCONY OF PUMPING STATION



STATE OF OHIO  
THE MAHONING VALLEY SANITARY DISTRICT  
CONTRACT NO. 29  
**PURIFICATION & PUMPING WORKS**  
ELECTRIC WIRING AND LIGHTING  
SPECIAL LIGHTING FIXTURES



THE E. B. & S. CO.  
BY E. B. & S. CO.  
CONTRACT NO. 29

April 1930  
Chief Engineer

Figure 25 - Dwg. 111 - Purification and Pumping Works - Special Lighting Fixtures.tif

## 08 Appendix II: Photo Index

Recordation of the Head House, Trestle and Settling Basins 1-4 for  
*Meander Water*, Mahoning Valley Sanitary District (MSVD)  
Mineral Ridge, Ohio

---

Name of Property: Mahoning Valley Sanitary District  
City: Mineral Ridge, Ohio  
County: Trumbull  
State: Ohio  
Name of Photographer: Chambers, Murphy & Burge/Ashley Cramer  
Date of Photographs: June 2011  
Location of Original Files: Chambers, Murphy & Burge Restoration Architects  
43 E. Market St., Suite 201, Akron OH 44308  
Number of Photos: 55

- 01 West Elevation, View of West Elevation, Camera pointing East
- 02 West Elevation, View of West Elevation, Camera pointing Southeast
- 03 Northwest Corner, View of Northwest corner and Basin #4, Camera pointing Southeast
- 04 West Elevation, View of West Elevation and Basin #4, Camera pointing South
- 05 West Elevation, View of Basin #4, Camera pointing East
- 06 West Elevation, View of Basin #4 and Trestle, Camera pointing Southeast
- 07 West Elevation, View of Trestle, Camera pointing Southeast
- 08 Southwest Corner, View of Southwest corner and Basin #1, Camera pointing Northeast
- 09 West Elevation, View of Basin #1, Camera pointing East
- 10 West Elevation, View of Basin #1, Camera pointing Southeast.
- 11 South Elevation, View of Basin #1 and Trestle at Head House, Camera pointing North
- 12 South Elevation, Arial view of buildings, Camera pointing North
- 13 South Elevation, Arial view of buildings, Camera pointing North
- 14 South Elevation, View of Head House and Trestle, Camera pointing Northeast
- 15 West Elevation, View of Basin #1 and Trestle, Camera pointing North
- 16 Southeast Corner, View of Head House and Trestle, Camera pointing North
- 17 East Elevation, View of Head House and Trestle, Camera pointing West
- 18 East Elevation, View of Head House and Trestle, Camera pointing West
- 19 East Elevation, View of Head House, Camera pointing East
- 20 North Elevation, View of Head House, Camera pointing South
- 21 East Elevation, View of Trestle, Camera pointing South
- 22 East Elevation, View of Head House, Camera pointing West
- 23 North Elevation, View of Head House, Camera pointing West
- 24 North Elevation, View of Basin #4, Camera pointing South

## 08 Appendix II: Photo Index

Recordation of the Head House, Trestle and Settling Basins 1-4 for  
*Meander Water*, Mahoning Valley Sanitary District (MSVD)  
Mineral Ridge, Ohio

---

- 25 South Elevation, Arial view of Buildings, Camera pointing North
- 26 East Elevation, View of door in Trestle, Camera pointing South
- 27 Top of Tower, View of Basin #4, Camera pointing Northwest
- 28 Top of Tower, View of Roof over Basin #3, Camera pointing Northeast
- 29 Top of Tower, View of Basin #1, Camera pointing Southwest
- 30 Top of Tower, View of Basin #1 and Roof over Basin #2, Camera pointing South
- 31 Inside of Head House, Building Plaque, Camera pointing East
- 32 Inside of Head House Entry Level, View of Recarbination Flow Meter, Camera pointing East
- 33 Inside of Head House Entry Level, View of Rapid Mixer, Camera pointing Southwest
- 34 Inside of Head House Entry Level, View of Rapid Mixer, Camera pointing South
- 35 Inside of Head House Entry Level, Camera pointing West
- 36 Inside of Head House Entry Level, Camera pointing East
- 37 Inside of Head House Entry Level, View of Switchboard, Camera pointing North
- 38 Inside of Head House, View of Switchboard, Camera pointing South
- 39 Inside of Head House, View of Switchboard, Camera pointing South
- 40 Inside Mixing Chambers Building, Camera pointing South
- 41 Inside Mixing Chambers Building, Camera pointing South
- 42 Inside Mixing Chambers Building, Flocculator Drive Mechanisms (motors), Camera pointing Southwest
- 43 Inside Mixing Chambers Building, Flocculator Drive Mechanisms (motors), Camera pointing South
- 44 Inside Settling Chamber Building, View of Settling Basin #3, Camera pointing Southwest
- 45 Inside Settling Chamber Building, View of Settling Basin #3, Camera pointing Northwest
- 46 Inside Mixing Chambers Building, View of Settling Basin #2, Camera pointing Southeast
- 47 Inside Mixing Chambers Building, Camera pointing North
- 48 Inside Settling Chamber Building, View of Settling Basin #2, Camera pointing East
- 49 Inside Mixing Chambers Building, View of Settling Basin #3, Camera pointing Northeast
- 50 Inside of Settling Basin Building, View of Settling Basin #2, Camera Southwest
- 51 Inside Settling Chamber Building, Camera pointing North
- 52 Inside Settling Chamber Building, View of Settling Basin #2, Camera pointing North

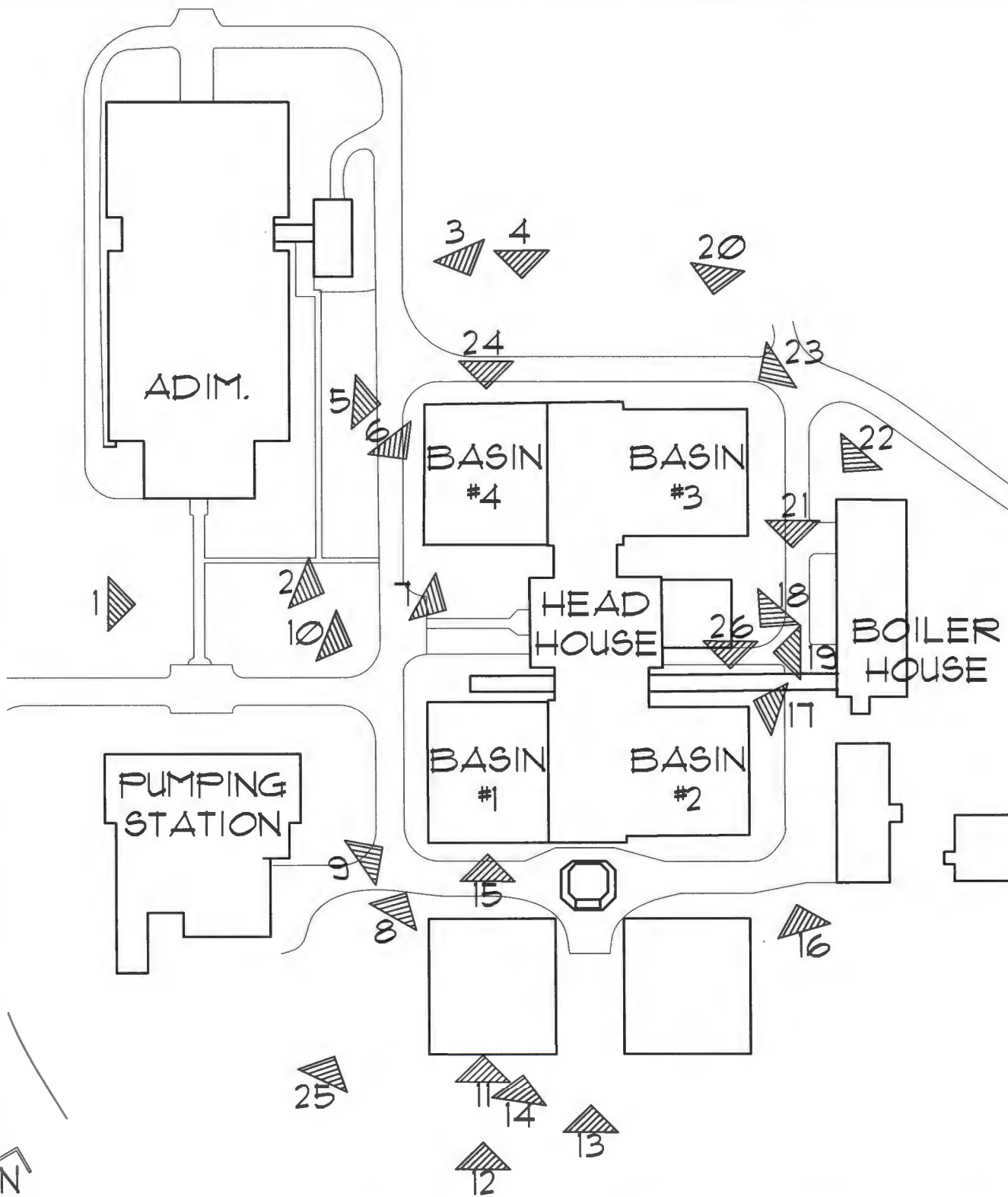
## **08     Appendix II: Photo Index**

**Recordation of the Head House, Trestle and Settling Basins 1-4 for  
*Meander Water*, Mahoning Valley Sanitary District (MSVD)  
Mineral Ridge, Ohio**

---

- |    |   |
|----|---|
| 53 | Inside Settling Chamber Building, View of Settling Basin #2, Camera pointing West |
| 54 | Inside of Car Shed, View of top of Trestle, Camera pointing East                  |
| 55 | Inside of Car Shed, View of Train Car, Camera pointing Southwest                  |

# Mahoning Valley Sanitary District



Drawings Not to Scale

Chambers, Murphy & Burge  
 43 E. Market St. Suite 201  
 Akron, Ohio 44308  
 Phone: (330) 434-9300  
 Fax: (330) 434-9331



Title: Photo Key Site Plan, Settling Basins

Location: Mineral Ridge, Ohio

Job No. 11-17

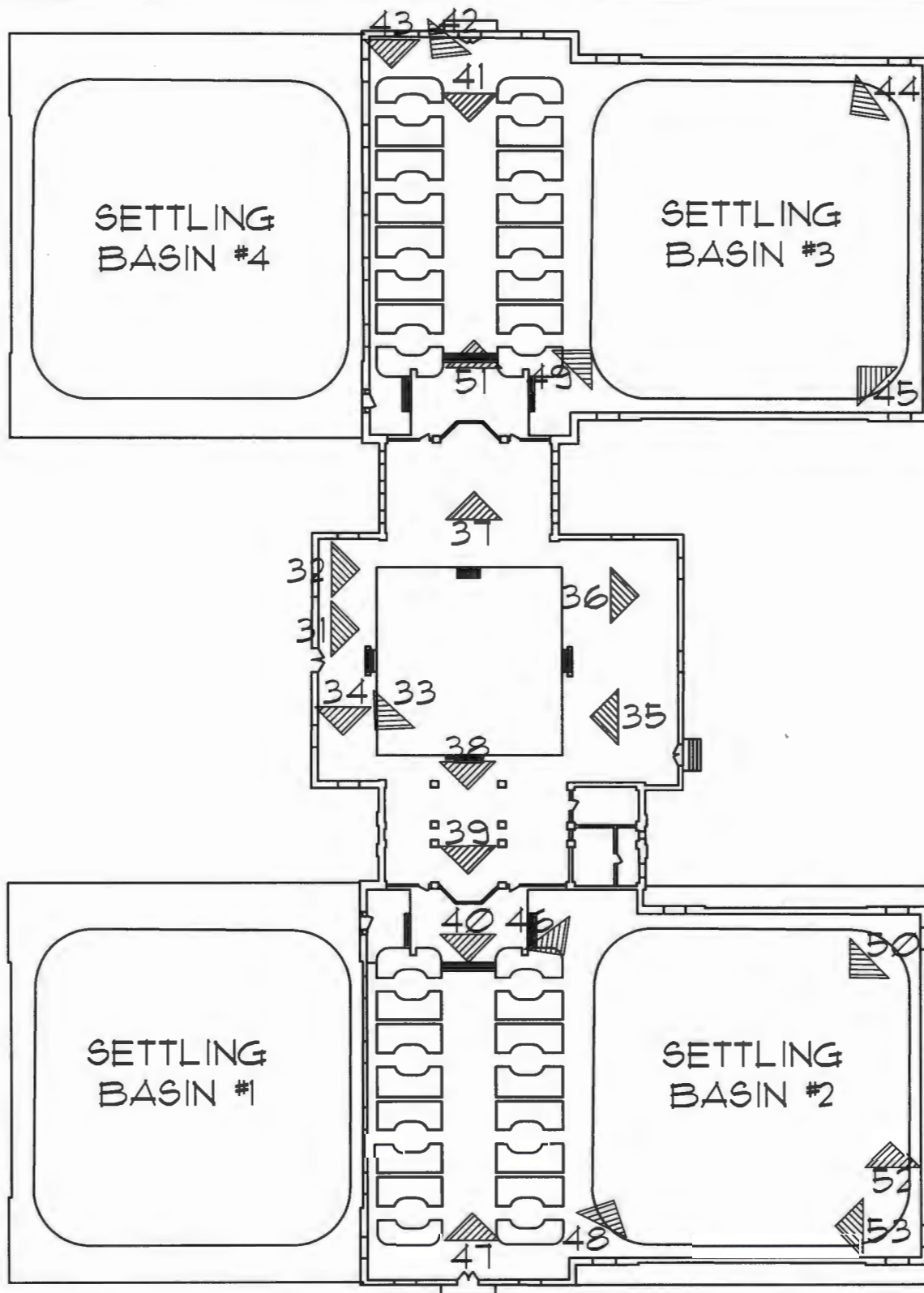
Date: August 2011

Sketch Number:

**PK-01**



# Mahoning Valley Sanitary District



Drawings Not to Scale

Chambers, Murphy & Burge  
43 E. Market St. Suite 201  
Akron, Ohio 44308  
Phone: (330) 434-9300  
Fax: (330) 434-9331



Title: Photo Key First Floor Plan

Location: Mineral Ridge, Ohio

Job No. 11-17

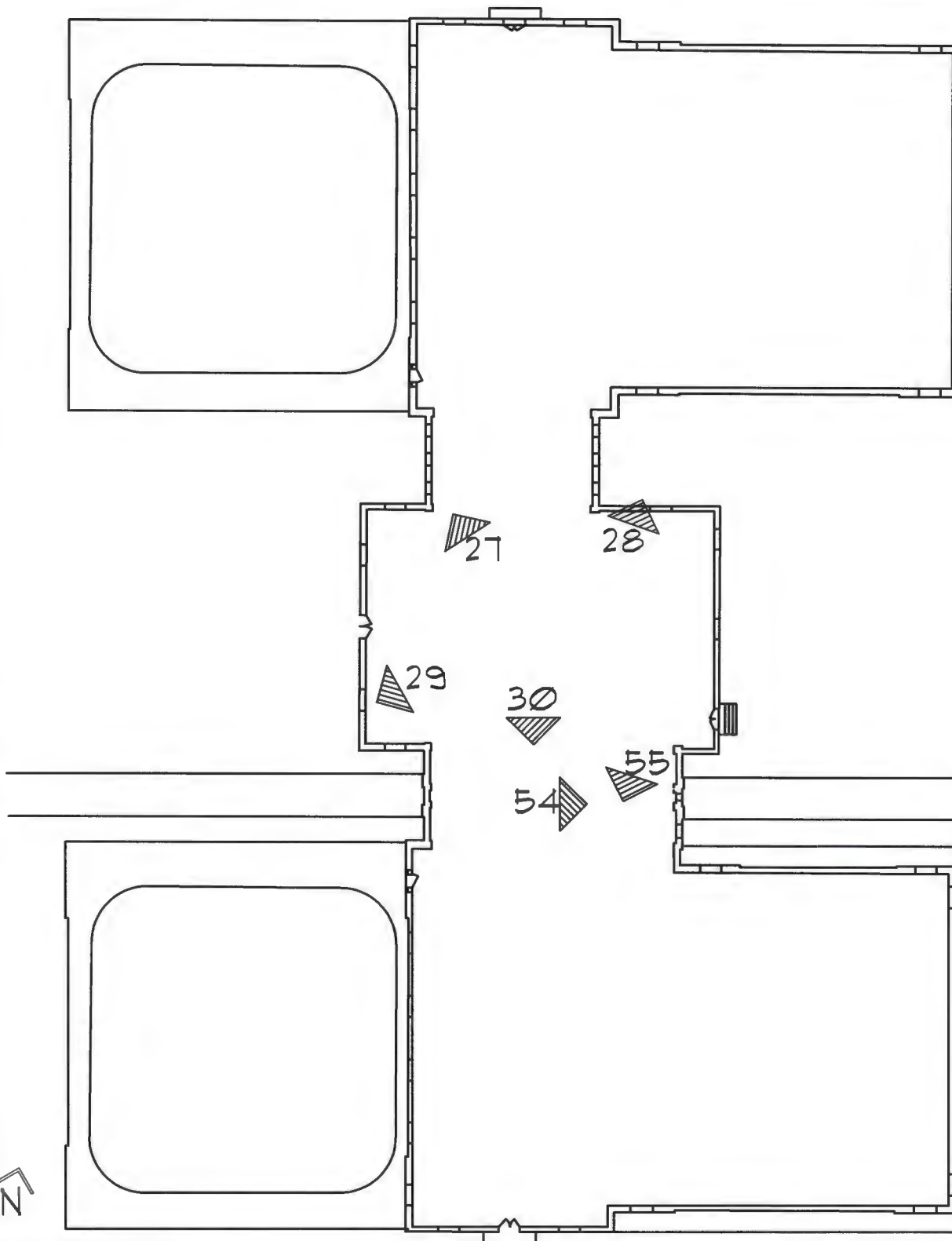
Date: August 2011

Sketch Number:

**PK-02**



# Mahoning Valley Sanitary District



Drawings Not to Scale

Chambers, Murphy & Burge  
43 E. Market St. Suite 201  
Akron, Ohio 44308  
Phone: (330) 434-9300  
Fax: (330) 434-9331



Title: Photo Key Upper Floor Plan

Location: Mineral Ridge, Ohio

Job No. 11-17

Date: August 2011

Sketch Number:

PK-03



01. OH\_Trumbull\_MahoningValleySanitaryDistrict\_0001.tif



02. OH\_Trumbull\_MahoningValleySanitaryDistrict\_0002.tif





03. OH\_Trumbull\_MahoningValleySanitaryDistrict\_0003.tif



04. OH\_Trumbull\_MahoningValleySanitaryDistrict\_0004.tif



05. OH\_Trumbull\_MahoningValleySanitaryDistrict\_0005.tif



06. OH\_Trumbull\_MahoningValleySanitaryDistrict\_0006.tif





07. OH\_Trumbull\_MahoningValleySanitaryDistrict\_0007.tif



08. OH\_Trumbull\_MahoningValleySanitaryDistrict\_0008.tif



09. OH\_Trumbull\_MahoningValleySanitaryDistrict\_0009.tif



10. OH\_Trumbull\_MahoningValleySanitaryDistrict\_0010.tif



11. OH\_Trumbull\_MahoningValleySanitaryDistrict\_0011.tif



12. OH\_Trumbull\_MahoningValleySanitaryDistrict\_0012.tif





09. OH\_Trumbull\_MahoningValleySanitaryDistrict\_0009.tif



10. OH\_Trumbull\_MahoningValleySanitaryDistrict\_0010.tif



13. OH\_Trumbull\_MahoningValleySanitaryDistrict\_0013.tif



14. OH\_Trumbull\_MahoningValleySanitaryDistrict\_0014.tif



15. OH\_Trumbull\_MahoningValleySanitaryDistrict\_0015.tif



16. OH\_Trumbull\_MahoningValleySanitaryDistrict\_0016.tif





17. OH\_Trumbull\_MahoningValleySanitaryDistrict\_0017.tif



18. OH\_Trumbull\_MahoningValleySanitaryDistrict\_0018.tif



19. OH\_Trumbull\_MahoningValleySanitaryDistrict\_0019.tif



20. OH\_Trumbull\_MahoningValleySanitaryDistrict\_0020.tif



21. OH\_Trumbull\_MahoningValleySanitaryDistrict\_0021.tif





22. OH\_Trumbull\_MahoningValleySanitaryDistrict\_0022.tif



23. OH\_Trumbull\_MahoningValleySanitaryDistrict\_0023.tif



24. OH\_Trumbull\_MahoningValleySanitaryDistrict\_0024.tif



25. OH\_Trumbull\_MahoningValleySanitaryDistrict\_0025.tif



26. OH\_Trumbull\_MahoningValleySanitaryDistrict\_0026.tif



27. OH\_Trumbull\_MahoningValleySanitaryDistrict\_0027.tif



28. OH\_Trumbull\_MahoningValleySanitaryDistrict\_0028.tif



29. OH\_Trumbull\_MahoningValleySanitaryDistrict\_0029.tif





30. OH\_Trumbull\_MahoningValleySanitaryDistrict\_0030.tif



31. OH\_Trumbull\_MahoningValleySanitaryDistrict\_0031.tif



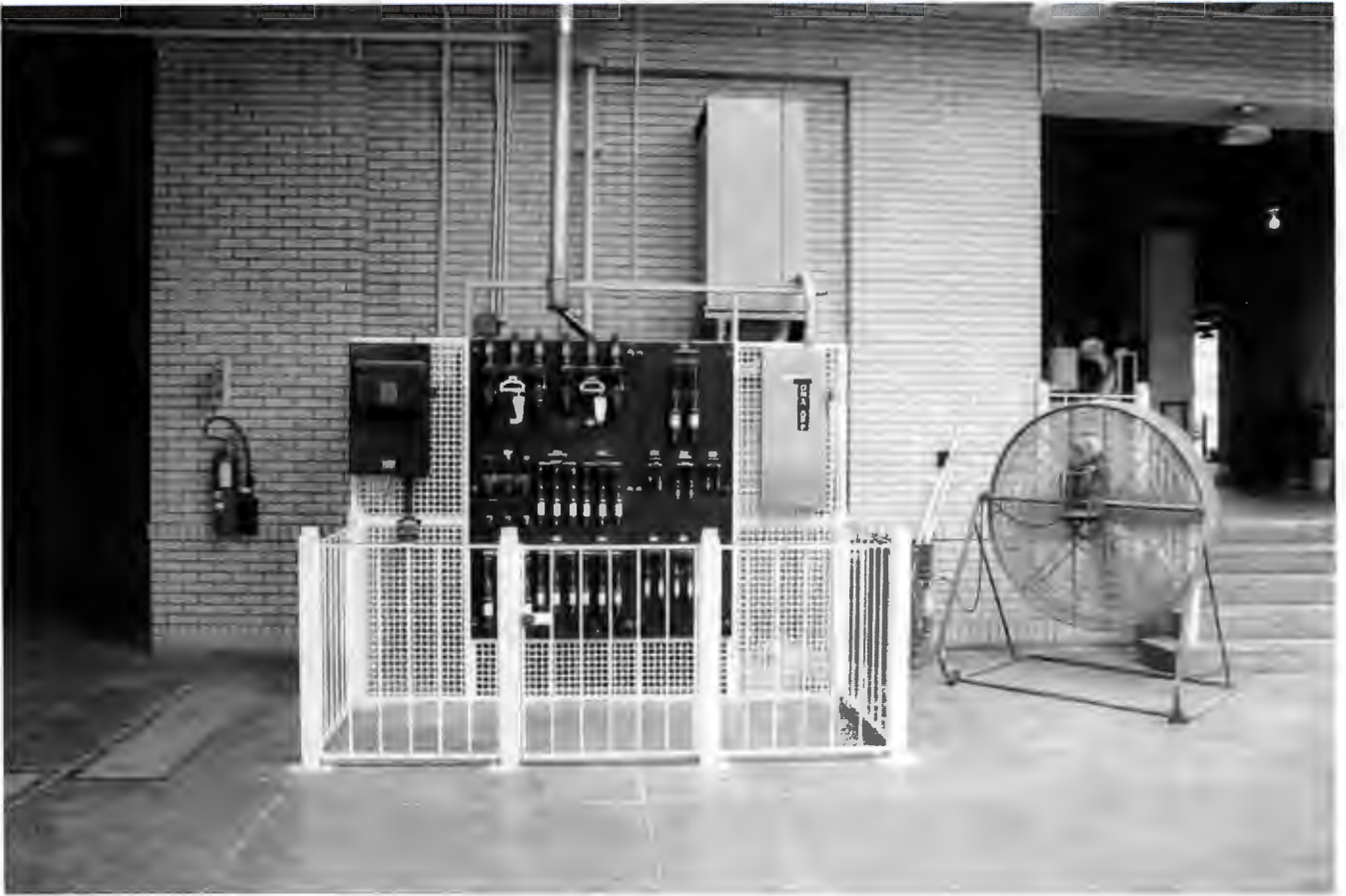
32. OH\_Trumbull\_MahoningValleySanitaryDistrict\_0032.tif



33. OH\_Trumbull\_MahoningValleySanitaryDistrict\_0033.tif



34. OH\_Trumbull\_MahoningValleySanitaryDistrict\_0034.tif



35. OH\_Trumbull\_MahoningValleySanitaryDistrict\_0035.tif



36. OH\_Trumbull\_MahoningValleySanitaryDistrict\_0036.tif





37. OH\_Trumbull\_MahoningValleySanitaryDistrict\_0037.tif



38. OH\_Trumbull\_MahoningValleySanitaryDistrict\_0038.tif





39. OH\_Trumbull\_MahoningValleySanitaryDistrict\_0039.tif



40. OH\_Trumbull\_MahoningValleySanitaryDistrict\_0040.tif



41. OH\_Trumbull\_MahoningValleySanitaryDistrict\_0041.tif



42. OH\_Trumbull\_MahoningValleySanitaryDistrict\_0042.tif



43. OH\_Trumbull\_MahoningValleySanitaryDistrict\_0043.tif



44. OH\_Trumbull\_MahoningValleySanitaryDistrict\_0044.tif





45. OH\_Trumbull\_MahoningValleySanitaryDistrict\_0045.tif



46. OH\_Trumbull\_MahoningValleySanitaryDistrict\_0046.tif



47. OH\_Trumbull\_MahoningValleySanitaryDistrict\_0047.tif



48. OH\_Trumbull\_MahoningValleySanitaryDistrict\_0048.tif





49. OH\_Trumbull\_MahoningValleySanitaryDistrict\_0049.tif



50. OH\_Trumbull\_MahoningValleySanitaryDistrict\_0050.tif



49. OH\_Trumbull\_MahoningValleySanitaryDistrict\_0049.tif



50. OH\_Trumbull\_MahoningValleySanitaryDistrict\_0050.tif



51. OH\_Trumbull\_MahoningValleySanitaryDistrict\_0051.tif



52. OH\_Trumbull\_MahoningValleySanitaryDistrict\_0052.tif



53. OH\_Trumbull\_MahoningValleySanitaryDistrict\_0053.tif





54. OH\_Trumbull\_MahoningValleySanitaryDistrict\_0054.tif





55. OH\_Trumbull\_MahoningValleySanitaryDistrict\_0055.tif

## 09 Appendix III: Historic Photo Index

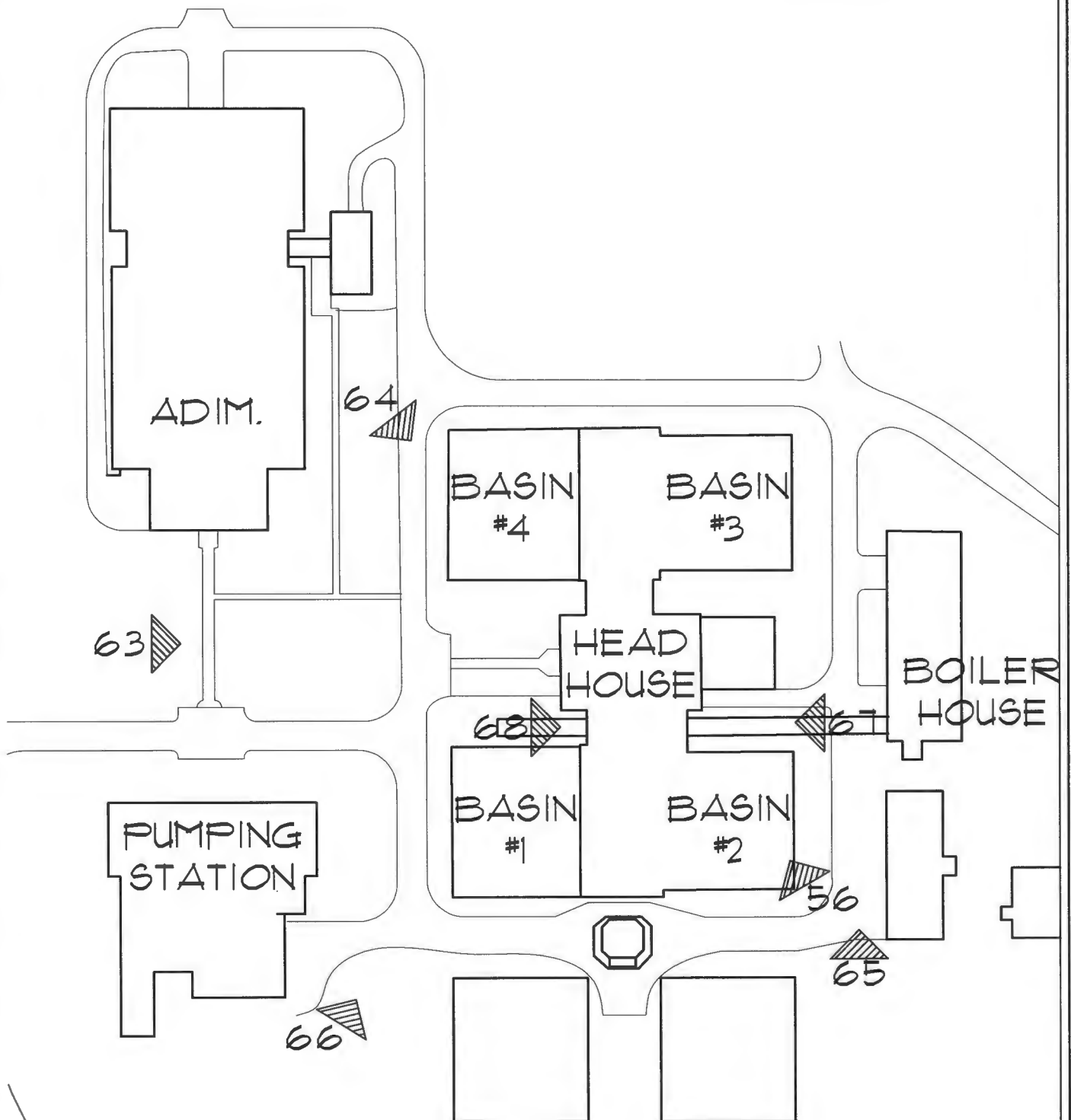
Recordation of the Head House, Trestle and Settling Basins 1-4 for  
*Meander Water*, Mahoning Valley Sanitary District (MSVD)  
Mineral Ridge, Ohio

---

Name of Property: Mahoning Valley Sanitary District  
City: Mineral Ridge, Ohio  
County: Trumbull  
State: Ohio  
Name of Photographer: Unknown  
Date of Photographs: c. 1931  
Location of Original Files: Mahoning Valley Sanitary Water District  
1181 Ohltown McDonald Rd  
Mineral Ridge, OH 44440-9322  
Number of Photos: 18

- 56 Archive # 489. Contract 29A. Camera at Southeast corner of Settling Basin #2, looking northwest. Taken Feb. 25, 1931.
- 57 Archive #490. Contract 29A. Taken from west side of Settling Basin #1, on center line looking east. March. 20, 1931.
- 58 Archive # 588. Contract 29. Camera at S.W. corner of Settling Basin 3, looking N.E. Aug. 17, 1931.
- 59 Archive #589. Contract 29. Camera at S.E. corner of Settling Basin #2, looking N.W. August. 17, 1931.
- 60 Archive #578. Contract 29. Cont. 29. Camera on north side of Head House, below chemical bins, looking NE across Settling Basin #3. July 22, 1931.
- 61 Archive #590. Contract 29. Camera at N.W. corner of Settling Basin #1, looking N.E. Aug. 17, 1931.
- 62 Date and description unknown.
- 63 Archive #638. Camera at Flag Pole base, looking east at Head House. Dec. 1, 1931.
- 64 Archive # 631. Contract 29. Camera 15 ft. east of Northeast corner of Filter Building, looking Southeast at Preliminary Treatment Works. Nov. 10, 1931.
- 65 Archive # 635. Contract 29. Camera 100 feet southeast of Settling Basin #2, looking north. Nov. 10, 1931.
- 66 Archive # 640. Camera 40 feet east of S.E. corner of Pumping Station, looking N.E. Dec. 1, 1931.
- 67 Archive #686. Camera on train Tracks by Boiler House, looking west. Jan. 26, 1932.
- 68 Archive # 643. Contract. 29. Camera 15 feet east of west end of Railroad Trestle, looking east. Dec. 1, 1931.
- 69 Archive # 633. Contract 29. Mixing Chamber 3 & 4 railings. Nov. 10, 1931
- 70 Archive #717. Mixing Chamber 1& 2 railings. March 17, 1932.
- 71 Archive #606. Settling Basin #2. Sept. 22, 1931.
- 72 Archive #632. Contract 29. Settling Basin #1 from west side. Nov. 10, 1931.
- 73 Archive #703. Settling Basin 3 & 4. Feb. 24, 1932.

# Mahoning Valley Sanitary District



Drawings Not to Scale

Chambers, Murphy & Burge  
43 E. Market St. Suite 201  
Akron, Ohio 44308  
Phone: (330) 434-9300  
Fax: (330) 434-9331



Title: Historic Photo Key Site Plan

Location: Mineral Ridge, Ohio

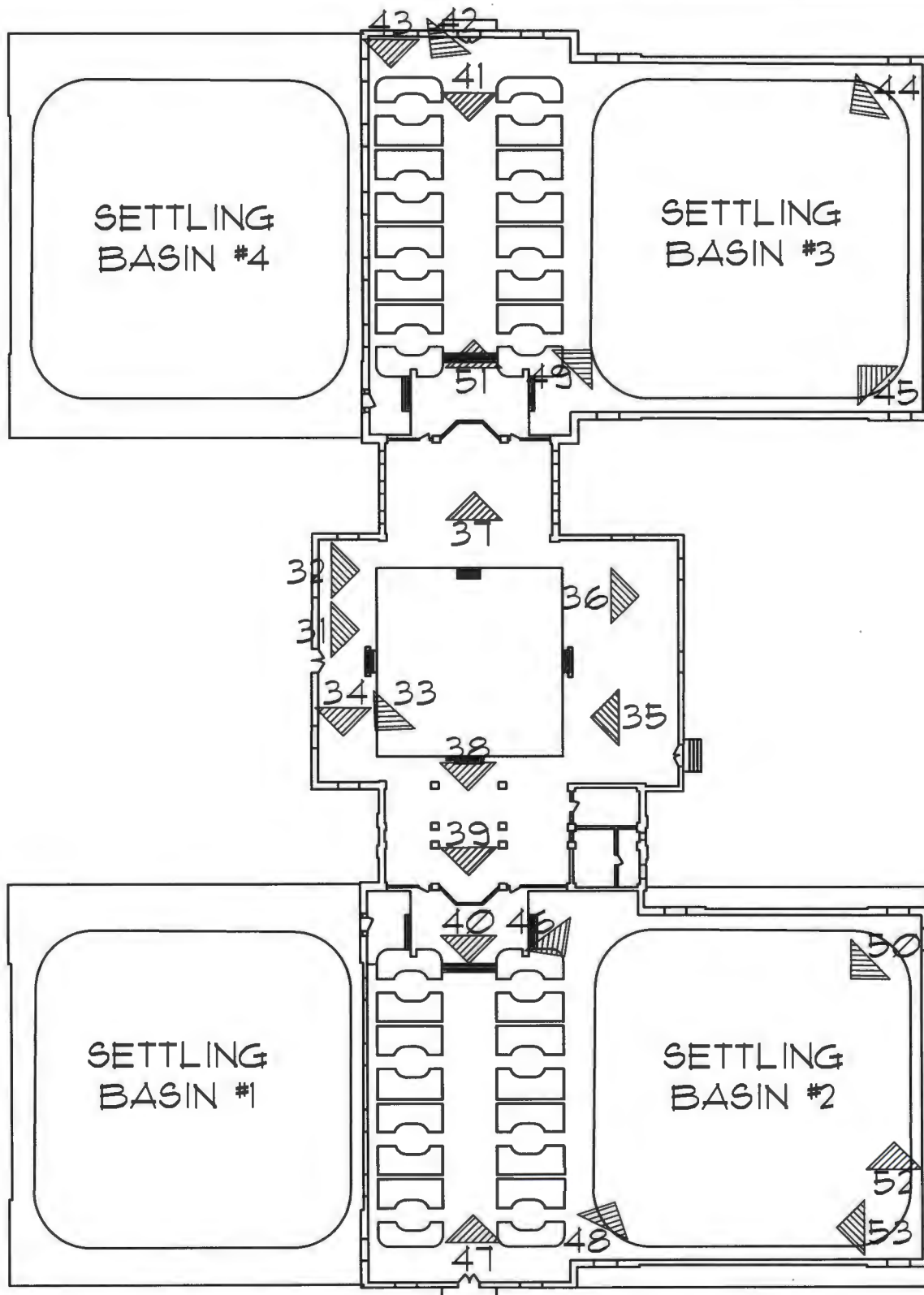
Job No. 11-17

Date: August 2011

Sketch Number:

**PK-04**

# Mahoning Valley Sanitary District



Drawings Not to Scale

Chambers, Murphy & Burge  
43 E. Market St. Suite 201  
Akron, Ohio 44308  
Phone: (330) 434-9300  
Fax: (330) 434-9331



Title: Historic Photo Key First Floor Plan

Location: Mineral Ridge, Ohio

Job No. 11-17

Date: August 2011

Sketch Number:

**PK-05**



56. OH\_Trumbull\_MahoningValleySanitaryDistrict\_0056.tif

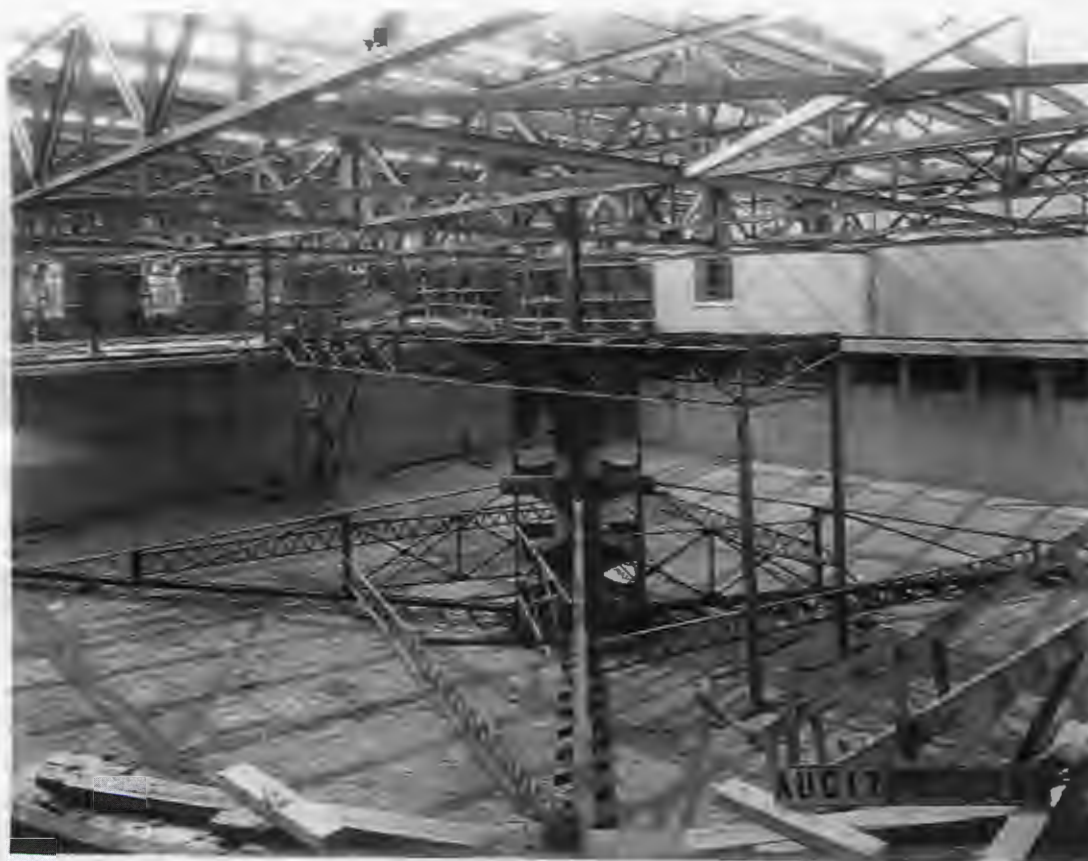


57. OH\_Trumbull\_MahoningValleySanitaryDistrict\_0057.tif

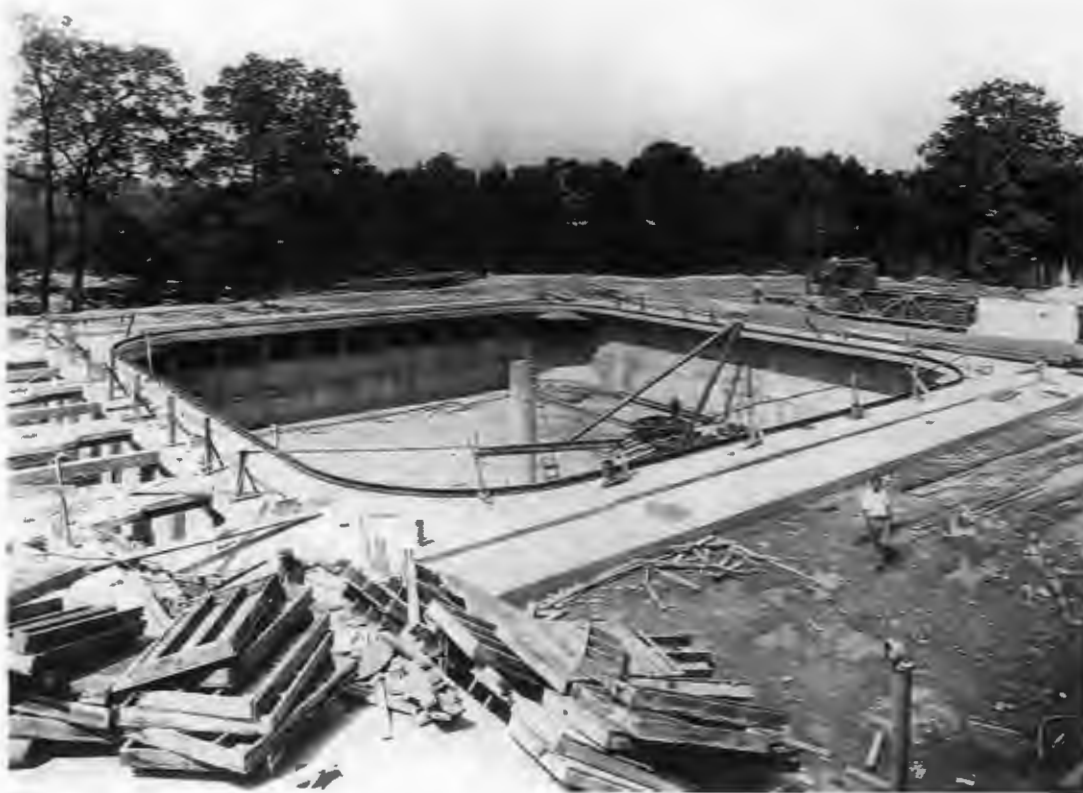




58. OH\_Trumbull\_MahoningValleySanitaryDistrict\_0058.tif



59. OH\_Trumbull\_MahoningValleySanitaryDistrict\_0059.tif



60. OH\_Trumbull\_MahoningValleySanitaryDistrict\_0060.tif



61. OH\_Trumbull\_MahoningValleySanitaryDistrict\_0061.tif